

U-FAB BOATS

459 Hwy 29, RR #4, Smiths Falls, ON K7A 4S5
(613) 283-1888 www.u-fabboats.com

Parts & Accessories



Safe-T QC Steering

Features
Single Helm
90° Black Bezel
Cables (8'-20')
Standard 3/4" tapered shaft

Aluminum Arches

Features
1.25" x 1.25" x 80" x 92" high
"acrylic canopy not included"



Aluminum Corners



"Cast"

Ace Steering Wheel

Features
3 Spoke (PVC) Hard PVC Grip
Spoke colour: Black
Diameter 13"
Fits 3/4" tapered shaft
Made by Teleflex Morse

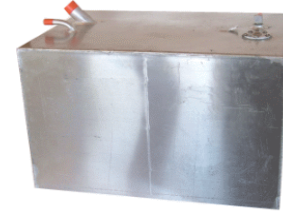


Hanging Fuel Tank

Manufactured according to the required size. All tanks come with a fuel fill and vent pipe and fuel sensor pick-up.
They are attached to the cross members under the deck. This saves on deck space and keeps the tanks out of site
(up to 50 gallons)
"Tanks also available for water"

Aluminum Console

Features
All Aluminum welded construction
Open Front Access
Accessories not included
36" High 24" Wide 16" Deep



On Deck Holding Tanks

(up to 50 gallons)
Aluminum Fuel Tanks are manufactured according to the required size.
All tanks come with a fuel fill and vent pipe and fuel sensor pick-up.
"Tanks also available for water"

Motor Supports

- #1) Motor Support .090" x 61" for up to 30 HP
- #2) Motor Support .125" x 61" for up to 150 HP
- #3) Motor Support .1875" x 61" for up to 250 HP

"Our motor supports have been engineered to eliminate cutting the rear cross member and the deck"



Bimini Tops

- 8' W x 8' L
- 8' W x 10' L
- 10' W x 10' L

Features
1.25" square aluminum frame
Installation hardware included
Stainless steel hooks, pad eyes, mounting screws and nylon fittings.



Marine Grade Carpet

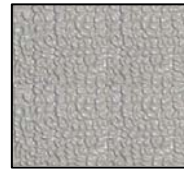
8' wide (29 oz.) Available in Blue, Green, Beige, Burgundy, and Grey
"Canada Only"



U-Fab Boats
459 Highway 29, R.R. #4
Smiths Falls, Ontario, K7A 4S5, Canada
Tel.: (613) 283-1888 Fax: (613) 284-2267

Parts and Accessories

White aluminum siding .024" thick 16" wide-----sold by linear foot
 White aluminum siding .024" thick 32" wide-----sold by linear foot
 Vinyl Flooring 8 ft. wide ** grey **-----sold by linear ft. →→
 Trim Railing 1.25" x 1.25" x 6" high-----sold by linear foot
 Door Latches 1.25" door latches for standard railing
 Door Latches 1.5" door latches for heavy duty railing
 Marine Grade Plywood 4' x 8' sheets



Vinyl Flooring

Heavy Duty Railing



Heavy Duty Railing Features

1.5" x 1.5" x up to 40" high
 16" to 32" Aluminum Siding (white)
 Commercial Applications & Heavy Duty Applications

Standard Railing



Standard Railing Features

1.25" x 1.25 x 28" high
 3 doors, hinges and latches
 16" Aluminum siding (white) & Anodized Railing

Aluminum Pilot House



All aluminum pilot house comes with sliding door and Plexiglas windows. Built in console and room for steering system and instruments

3' wide pilot house has no door and is open at back

Call for pricing and sizes

Sundeck Kit

*marine grade
 plywood
 recommended
 for deck*



Features

4 Heavy duty Aluminum Posts & all Aluminum Frame
 Ladder c/w Handrail & 6" High Trim Railing on Deck

Standard Size

84" High 8' Wide 10' Long

Lenco Electric Motors

Primary or auxiliary propulsion system available in 24-Volt / 2HP and 36-Volt / 3HP

Joy Ride 2HP Digital Drives
 2HP 24-V Digital Drive Kit

Joy Ride 3HP Digital Drives
 3HP 36-V Digital Drive Kit

Micro Ride 2HP Digital Drives 2HP
 24-V Digital Drive Kit



Efficient Cool Wound™ salt water digital motors with full forward and reverse thrust



Joy Ride Steering System
 • Cruise control
 • Battery voltage display



Micro Ride Steering System

Kits include:

- 24-volt actuators (2) with 6-foot leads and Deutsch connectors
- Efficient Cool Wound™ salt water motors (2)
- Actuator extension harnesses with Deutsch connectors sold separately in lengths of 7', 14', 20', 26' & 32'

Choose one of two switch/steering options:

- Joy Ride (all functions built in) or • Micro Ride with a Lenco 125 switch to raise or lower motors

U-Fab Boats

459 Highway 29, R.R. #4

Smiths Falls, Ontario, K7A 4S5, Canada

Tel.: (613) 283-1888 Fax: (613) 284-2267